



**REGIONAL SPECIALISED METEOROLOGICAL CENTRE-TROPICAL CYCLONES, NEW DELHI  
TROPICAL WEATHER OUTLOOK**

**DEMS-RSMC TROPICAL CYCLONES NEW DELHI DATED 18.11.2023**

**TROPICAL WEATHER OUTLOOK FOR NORTH INDIAN OCEAN (THE BAY OF BENGAL AND THE ARABIAN SEA) VALID FOR NEXT 168 HOURS ISSUED AT 0600 UTC OF 18.11.2023 BASED ON 0300 UTC OF 18.11.2023.**

**BAY OF BENGAL:**

**(A): DEPRESSION (REMNANT OF CYCLONIC STORM "MIDHILI") WEAKENED INTO A LOW PRESSURE AREA OVER NORTH TRIPURA AND NEIGHBOURHOOD.**

THE DEPRESSION (REMNANT OF CYCLONIC STORM "MIDHILI") OVER TRIPURA AND ADJOINING BANGLADESH & MIZORAM MOVED NORTHEASTWARDS AND WEAKENED INTO A LOW PRESSURE AREA OVER NORTH TRIPURA AND NEIGHBOURHOOD AT 0300 UTC OF TODAY, THE 18TH NOVEMBER.

IT IS LIKELY TO CONTINUE TO MOVE FURTHER NORTHEASTWARDS AND BECOME LESS MARKED DURING NEXT 06 HOURS.

SCATTERED LOW AND MEDIUM CLOUDS WITH EMBEDDED MODERATE TO INTENSE CONVECTION LAY OVER NORTH MYANMAR AND ISOLATED WEAK TO MODERATE CONVECTION LAY OVER EAST ARUNACHAL PRADESH. SCATTERED LOW AND MEDIUM CLOUDS LAY OVER BANGLADESH AND REST NORTHEAST STATES.

THIS IS LAST UPDATE IN ASSOCIATION WITH THIS SYSTEM.

**(B) A CYCLONIC CIRCULATION EXTENDING UPTO 5.8 KM ABOVE MEAN SEA LEVEL LAY OVER SOUTHEAST BAY OF BENGAL & ADJOINING ANDAMAN SEA.**

**PROBABILITY OF CYCLOGENESIS (FORMATION OF DEPRESSION) DURING NEXT 168 HRS:**

24 HOURS	24-48 HOURS	48-72 HOURS	72-96 HOURS	96-120 HOURS	120-144 HOURS	144-168 HOURS
NIL	NIL	NIL	NIL	NIL	NIL	NIL

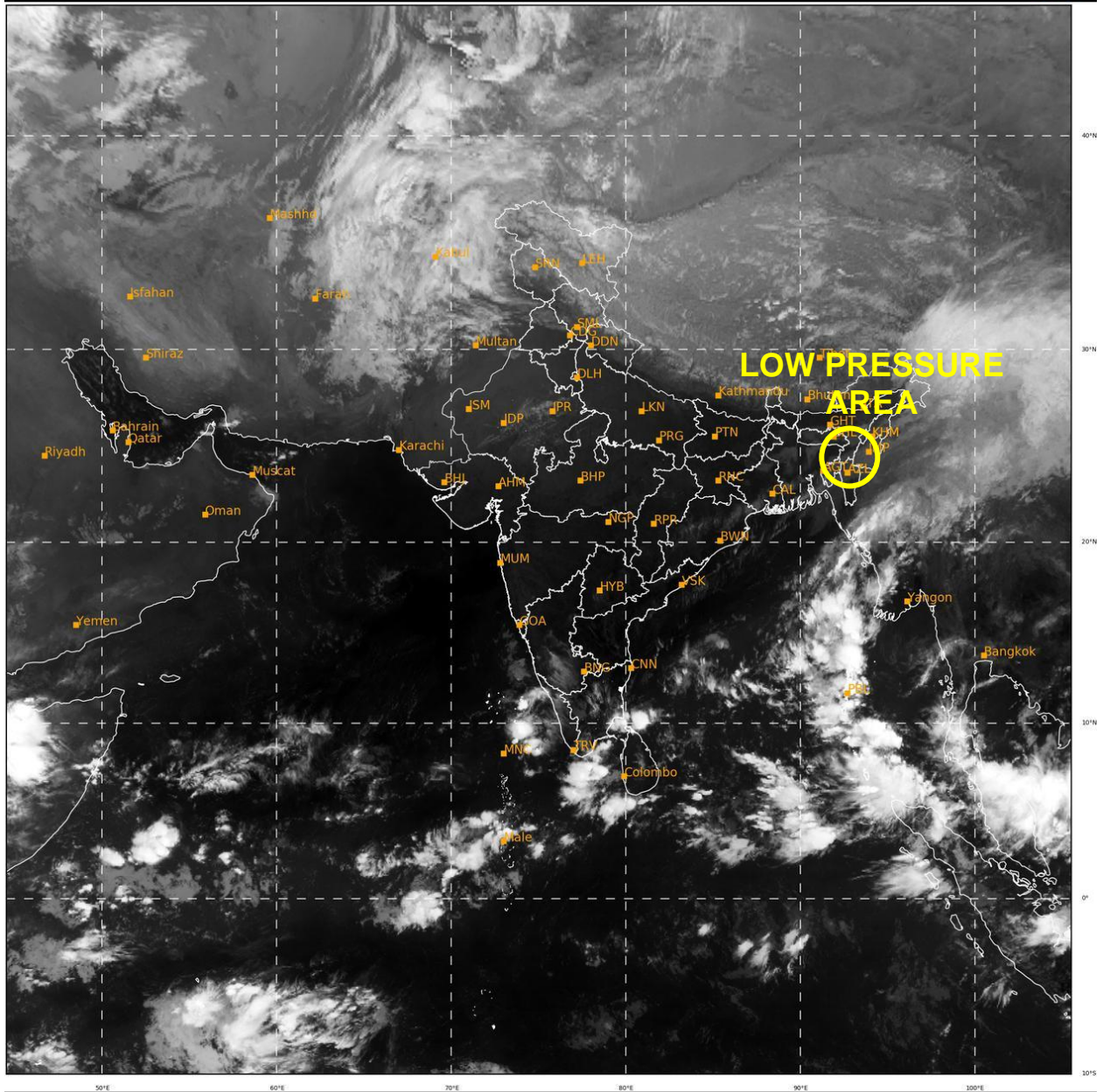
**ARABIAN SEA:**

SCATTERED LOW AND MEDIUM CLOUDS WITH EMBEDDED MODERATE TO INTENSE CONVECTION LAY OVER SOUTH ARABIAN SEA, LAKSHADWEEP ISLANDS AREA AND COMORIN AREA. SCATTERED LOW AND MEDIUM CLOUDS WITH EMBEDDED ISOLATED WEAK TO MODERATE CONVECTION LAY OVER EXTREME NORTHWEST ARABIAN SEA.

**PROBABILITY OF CYCLOGENESIS (FORMATION OF DEPRESSION) DURING NEXT 168 HRS:**

24 HOURS	24-48 HOURS	48-72 HOURS	72-96 HOURS	96-120 HOURS	120-144 HOURS	144-168 HOURS
NIL	NIL	NIL	NIL	NIL	NIL	NIL

**Remarks:** NIL



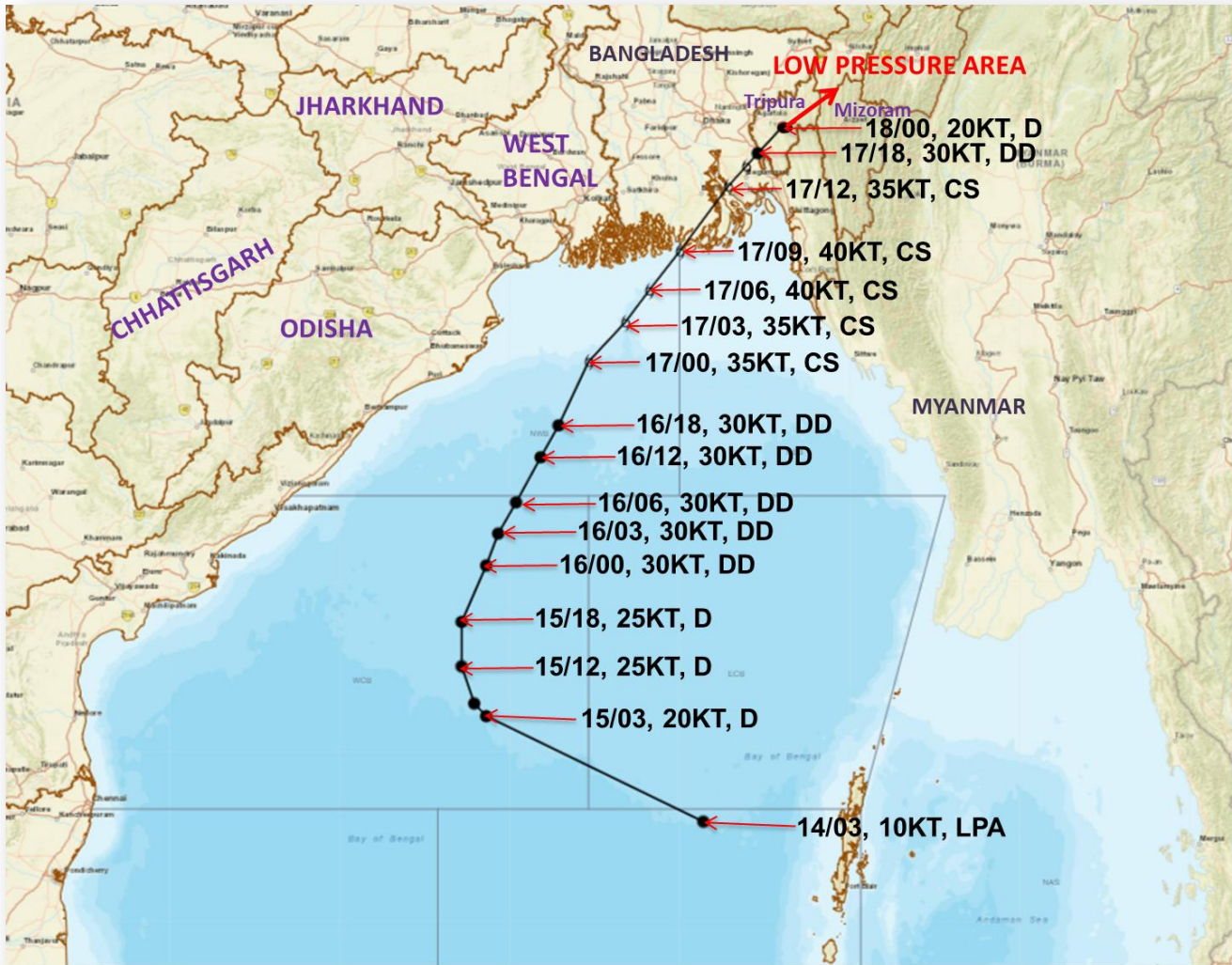
520

931

IMD, DELHI



**OBSERVED AND FORECAST TRACK AND INTENSITY IN ASSOCIATION WITH LOW PRESSURE AREA (REMNANT OF CYCLONIC STORM "MIDHILI") OVER NORTH TRIPURA AND NEIGHBOURHOOD BASED ON 0300 UTC (0830 HRS IST) OF 18TH NOVEMBER 2023.**



DATE/TIME IN UTC  
 IST=UTC + 0530  
 L: LOW PRESSURE AREA  
 WML: WELL MARKED LOW PRESSURE AREA  
 D: DEPRESSION (17-27 KT)  
 DD: DEEP DEPRESSION (28-33 KT)  
 CS: CYCLONIC STORM (34-47 KT)  
 SCS: SEVERE CYCLONIC STORM (48-63KT)  
 VSCS: VERY SEVERE CYCLONIC STORM (64-89 KT)  
 ESCS: EXTREMELY SEVERE CYCLONIC STORM (90-119 KT)  
 SuCS: SUPER CYCLONIC STORM ( $\geq 120$  KT)

- LESS THAN 34 KT
- 34-47 KT
- $\geq 48$  KT
- OBSERVED TRACK
- FORECAST TRACK
- CONE OF UNCERTAINTY

Cloud distribution: (a) Isolated: <25%, Scattered:25-50%, Broken: 51-75%, Solid:>75%, Convection Intensity: (a) Weak: Cloud Top Temperature (CTT) >-25°C, (b) Moderate: CTT: - 25°C to -40°C, (c) Intense: CTT: - 41°C to -70°C and (d) Very Intense: : Less than -70°C  
 PROBABILITY OF CYCLOGENESIS (FORMATION OF DEPRESSION):NIL: 0%, LOW: 1-33%, , MODERATE: 34-66% AND HIGH: 67-100%  
 This is a guidance Bulletin for WMO/ESCAP Panel Member countries. Visit respective National websites for Country specific Bulletins